

# The King is Dead

West

♩ = 90

mp

Measures 1-8 of the piece. The music is in 4/4 time. The melody is in the treble clef, and the bass line is in the bass clef. The melody starts with a half note G4, followed by quarter notes A4 and B4, then a dotted half note C5. The bass line starts with a half note G3, followed by quarter notes A3 and B3, then a dotted half note C4. The melody continues with a half note D5, followed by quarter notes E5 and F5, then a dotted half note G5. The bass line continues with a half note D4, followed by quarter notes E4 and F4, then a dotted half note G4. The melody ends with a half note A5, followed by quarter notes B5 and C6, then a dotted half note D6. The bass line ends with a half note A3, followed by quarter notes B3 and C4, then a dotted half note D4.

9

Measures 9-16 of the piece. The melody is in the treble clef, and the bass line is in the bass clef. The melody starts with a half note G4, followed by quarter notes A4 and B4, then a dotted half note C5. The bass line starts with a half note G3, followed by quarter notes A3 and B3, then a dotted half note C4. The melody continues with a half note D5, followed by quarter notes E5 and F5, then a dotted half note G5. The bass line continues with a half note D4, followed by quarter notes E4 and F4, then a dotted half note G4. The melody ends with a half note A5, followed by quarter notes B5 and C6, then a dotted half note D6. The bass line ends with a half note A3, followed by quarter notes B3 and C4, then a dotted half note D4.

17

f

Measures 17-24 of the piece. The melody is in the treble clef, and the bass line is in the bass clef. The melody starts with a half note G4, followed by quarter notes A4 and B4, then a dotted half note C5. The bass line starts with a half note G3, followed by quarter notes A3 and B3, then a dotted half note C4. The melody continues with a half note D5, followed by quarter notes E5 and F5, then a dotted half note G5. The bass line continues with a half note D4, followed by quarter notes E4 and F4, then a dotted half note G4. The melody ends with a half note A5, followed by quarter notes B5 and C6, then a dotted half note D6. The bass line ends with a half note A3, followed by quarter notes B3 and C4, then a dotted half note D4.

25

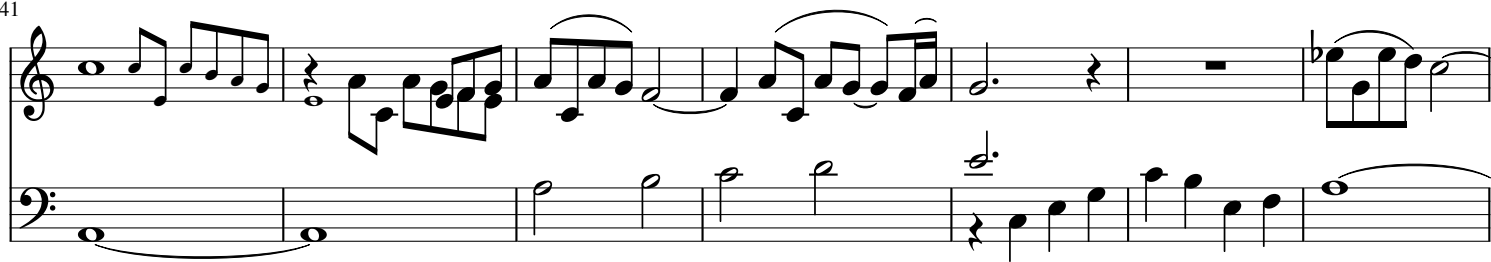
Measures 25-32 of the piece. The melody is in the treble clef, and the bass line is in the bass clef. The melody starts with a half note G4, followed by quarter notes A4 and B4, then a dotted half note C5. The bass line starts with a half note G3, followed by quarter notes A3 and B3, then a dotted half note C4. The melody continues with a half note D5, followed by quarter notes E5 and F5, then a dotted half note G5. The bass line continues with a half note D4, followed by quarter notes E4 and F4, then a dotted half note G4. The melody ends with a half note A5, followed by quarter notes B5 and C6, then a dotted half note D6. The bass line ends with a half note A3, followed by quarter notes B3 and C4, then a dotted half note D4.

33

mp

Measures 33-40 of the piece. The melody is in the treble clef, and the bass line is in the bass clef. The melody starts with a half note G4, followed by quarter notes A4 and B4, then a dotted half note C5. The bass line starts with a half note G3, followed by quarter notes A3 and B3, then a dotted half note C4. The melody continues with a half note D5, followed by quarter notes E5 and F5, then a dotted half note G5. The bass line continues with a half note D4, followed by quarter notes E4 and F4, then a dotted half note G4. The melody ends with a half note A5, followed by quarter notes B5 and C6, then a dotted half note D6. The bass line ends with a half note A3, followed by quarter notes B3 and C4, then a dotted half note D4.

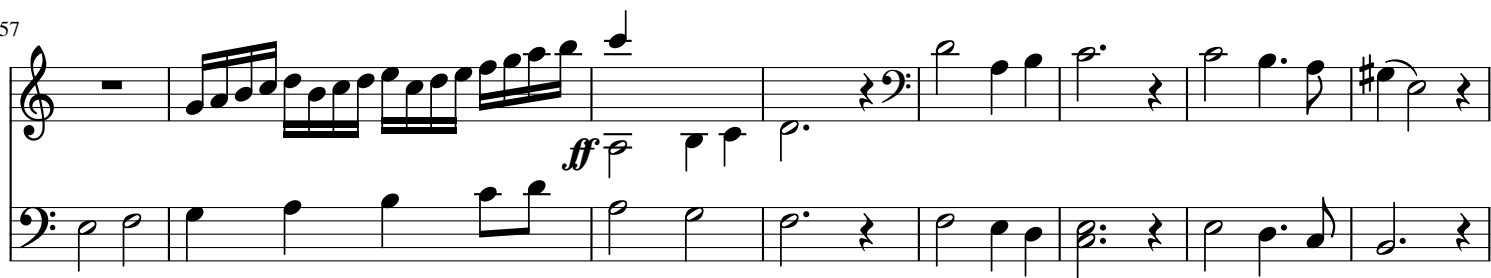
41



48

*cresc.*

57



65



74

*rit.*