

Still Another Wanderer

Timothy Pinkham

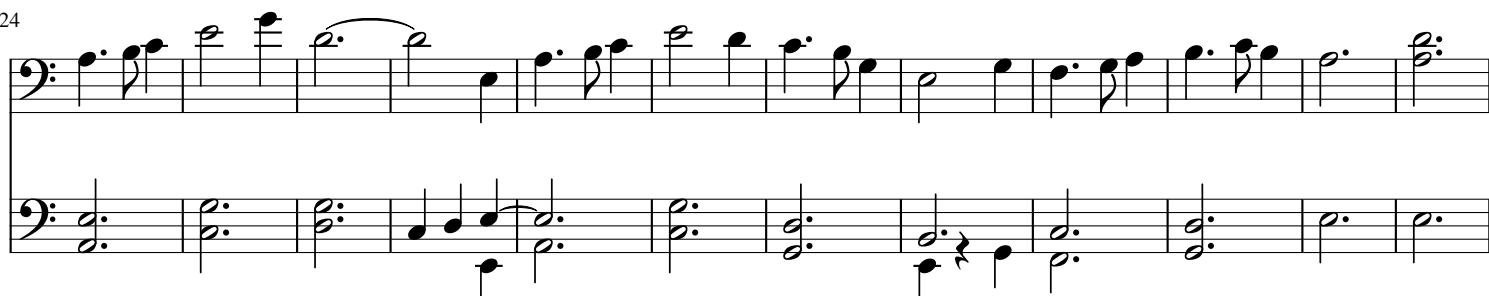
$\text{♩} = 48$



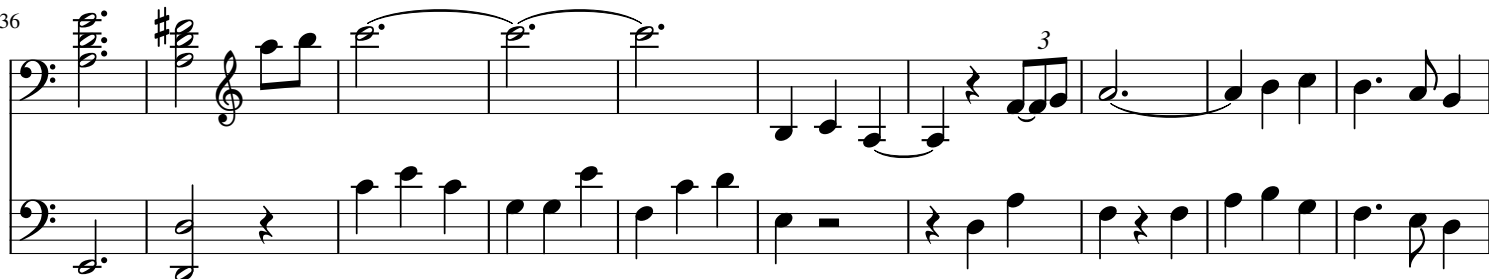
13



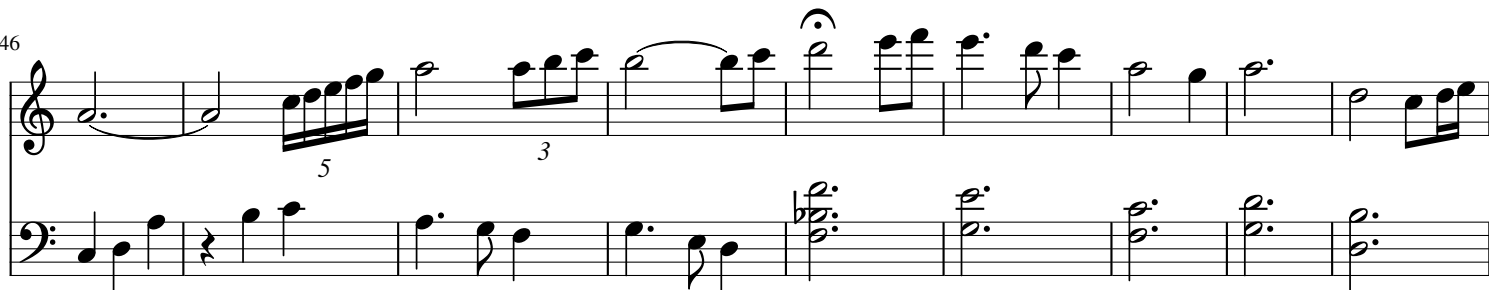
24



36



46



55

Measures 55-62. The music is in 2/4 time. The treble staff features a melody with eighth and sixteenth notes, including two triplet markings. The bass staff provides a harmonic accompaniment with chords and moving lines.

63

Measures 63-70. The treble staff continues the melody with some rests and eighth notes. The bass staff features a more active accompaniment with eighth-note patterns and chords.

75

Measures 75-82. The treble staff shows a key change to D major (indicated by a sharp sign) and includes a long melodic line with a slur. The bass staff has a rhythmic accompaniment of eighth notes.

83

Measures 83-90. The treble staff continues the melody in D major. The bass staff features a complex accompaniment with many beamed eighth notes and chords.

91

Measures 91-98. The treble staff shows the final part of the melody with some slurs. The bass staff continues with a rhythmic accompaniment, ending with a long note in the final measure.

100

113

124

135

146

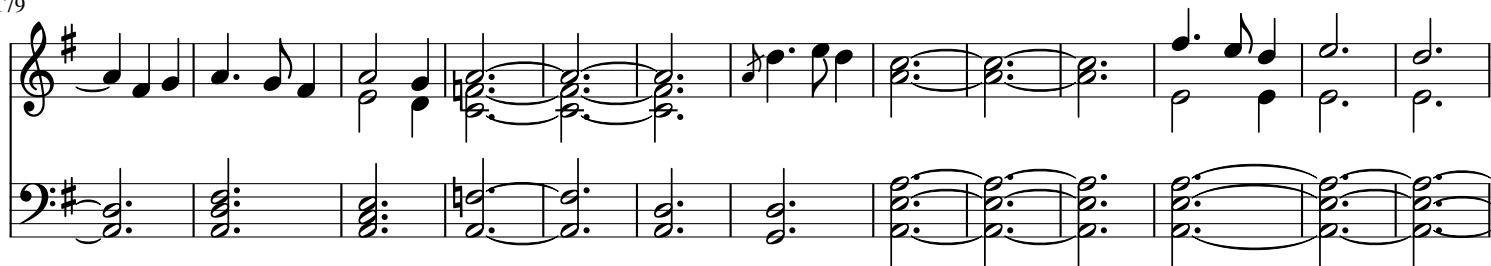
157



168



179



192

rit.

