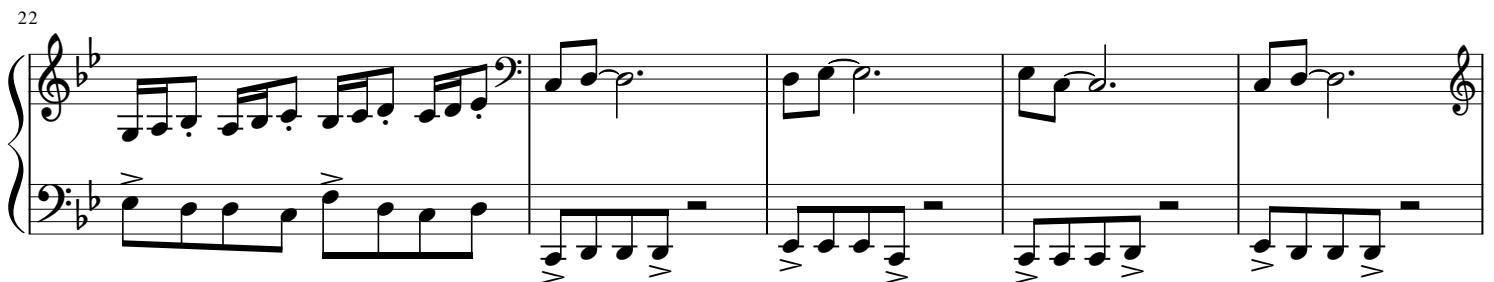
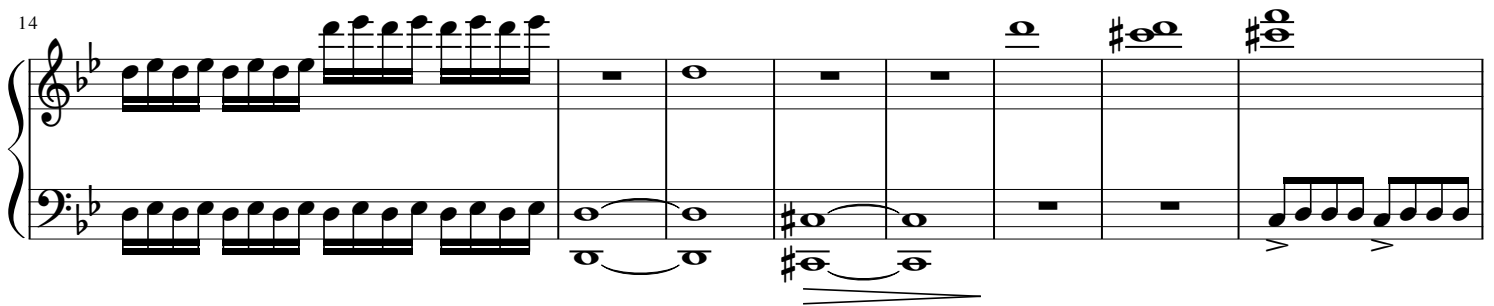
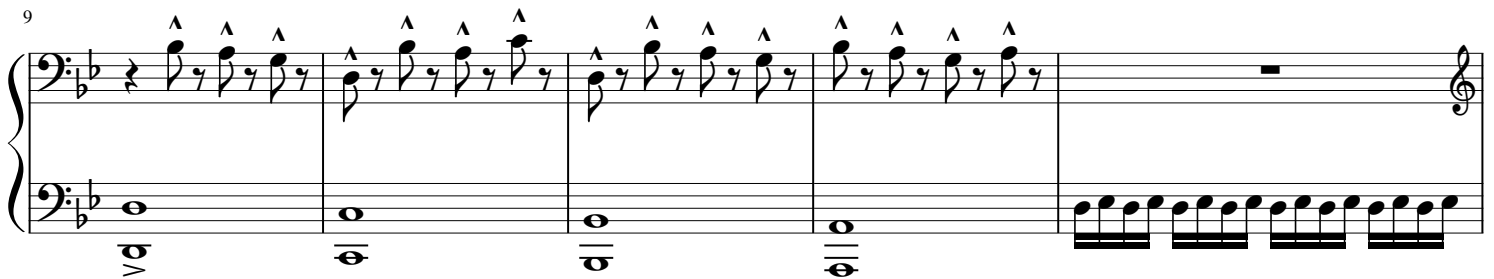
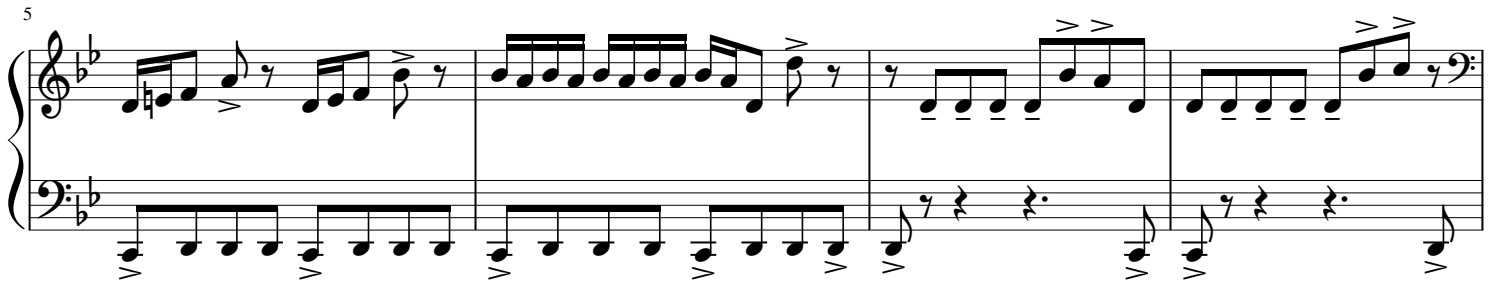
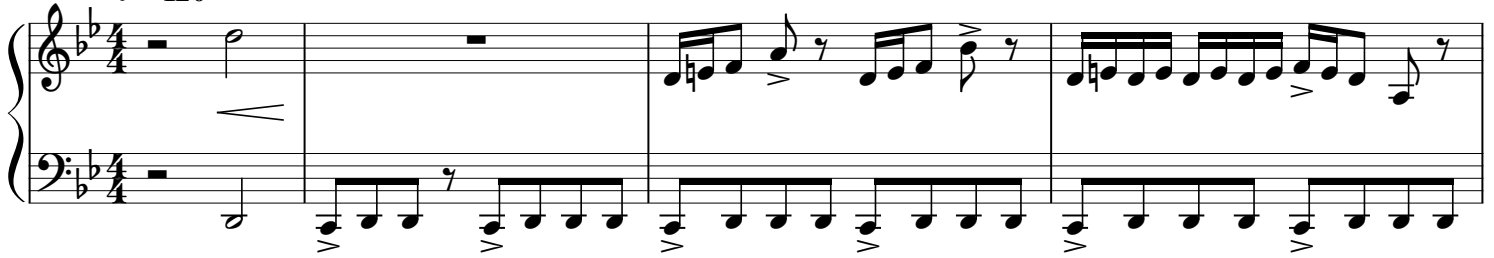


Moleman

Telaron

♩ = 120



27

System 1 (measures 27-31). The treble staff features a melodic line with eighth and sixteenth notes, including accents and slurs. The bass staff provides a steady eighth-note accompaniment. The key signature has two flats (B-flat and E-flat).

32

System 2 (measures 32-36). Measures 32-34 continue the eighth-note accompaniment in the bass and have a more active treble staff. Measure 35 features a whole note chord in the treble (B-flat and E-flat) over a whole note bass note (B-flat). Measure 36 returns to the eighth-note accompaniment.

38

System 3 (measures 38-41). Measures 38-40 have a whole rest in the treble and eighth-note accompaniment in the bass. Measure 41 has a melodic phrase in the treble (B-flat, C, D, E-flat, F, G) and a whole note bass note (B-flat).

42

System 4 (measures 42-45). Measures 42-44 have a melodic line in the treble and a whole note bass line (F#, B-flat, E-flat). Measure 45 has a melodic phrase in the treble and a whole rest in the bass.

46

System 5 (measures 46-49). Measures 46-48 have a melodic line in the treble and eighth-note accompaniment in the bass. Measure 49 has a melodic phrase in the treble and eighth-note accompaniment in the bass.

50

System 6 (measures 50-53). Measures 50-52 have a melodic line in the treble and eighth-note accompaniment in the bass. Measure 53 has a melodic phrase in the treble and eighth-note accompaniment in the bass, ending with a double bar line.