

# Return to Wesnoth

Mattias Westlund

$\text{♩} = 150$

*mf*

7

13

19

25

5

33

mf

42

57

f

68

74

mp

81



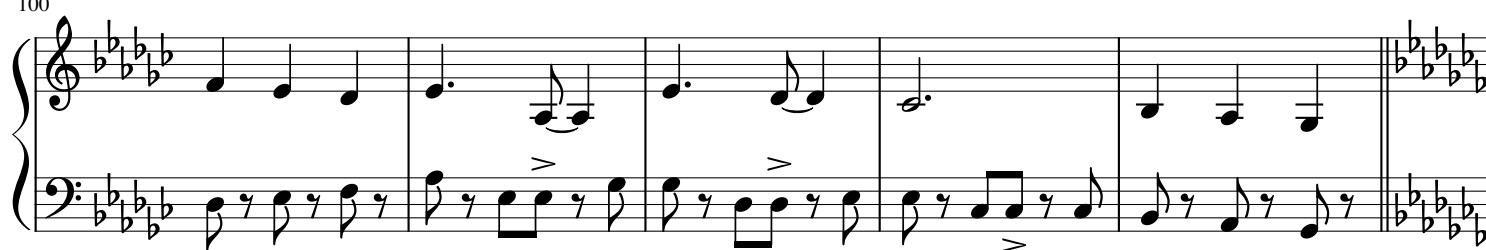
88



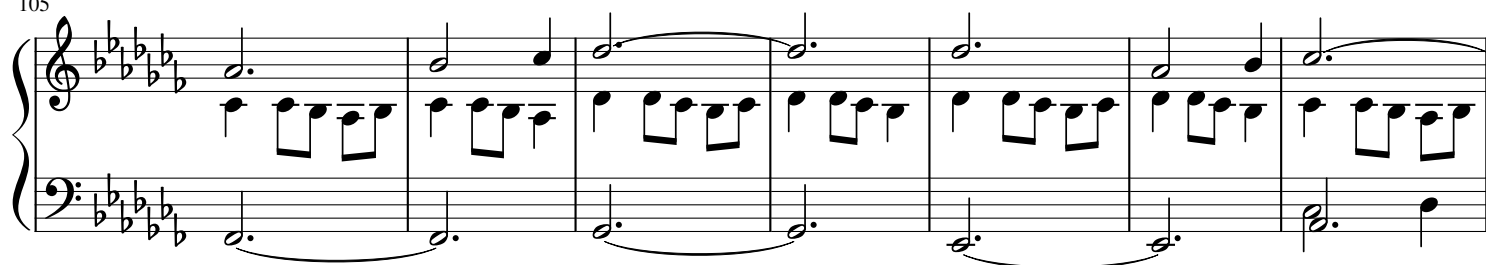
94



100



105



112

Measures 112-117. The music is in a key with five flats (B-flat major or D-flat minor). The right hand features a melody with eighth and quarter notes, while the left hand provides a bass line with half notes and quarter notes, including some tied notes.

118

Measures 118-123. The right hand continues the melodic line with eighth notes and quarter notes. The left hand features a steady bass line with half notes and quarter notes, including some tied notes.

124

Measures 124-129. The right hand has a more active melody with eighth and quarter notes. The left hand continues with a bass line of half and quarter notes. A triplet of eighth notes is marked with a '3' in measure 129.

130

Measures 130-139. The right hand features a melody with eighth and quarter notes. The left hand has a bass line with half and quarter notes. A double bar line occurs between measures 133 and 134. The key signature changes to three flats (F major or D minor) starting in measure 134. A *pp* (pianissimo) dynamic marking is present in measure 138.

140

Measures 140-145. The right hand has a melody with eighth and quarter notes. The left hand features a steady bass line with eighth notes. A *pp* (pianissimo) dynamic marking is present in measure 145.

146

Measures 146-151. Treble clef: Melodic line with eighth and sixteenth notes. Bass clef: Steady eighth-note accompaniment. Key signature: three flats.

152

Measures 152-157. Treble clef: Melodic line with eighth and sixteenth notes. Bass clef: Steady eighth-note accompaniment. Key signature: three flats.

158 rit.

Measures 158-166. Measure 158: *rit.* (ritardando). Measures 159-160: *mp* (mezzo-piano). Treble clef: Melodic line with eighth and sixteenth notes. Bass clef: Steady eighth-note accompaniment. Key signature: three flats.

171

Measures 171-176. Treble clef: Melodic line with eighth and sixteenth notes. Bass clef: Steady eighth-note accompaniment. Key signature: three flats.