

# Returning in Time

Arranged by Bobirobi20

Composed by Telaron

Measures 1-5 of the piece. The key signature is B-flat major (two flats). The time signature is 4/4. Measure 1 starts with a piano (*p*) dynamic. Measure 5 ends with a mezzo-piano (*mp*) dynamic. The notation features a mix of eighth and quarter notes, with some measures containing rests.

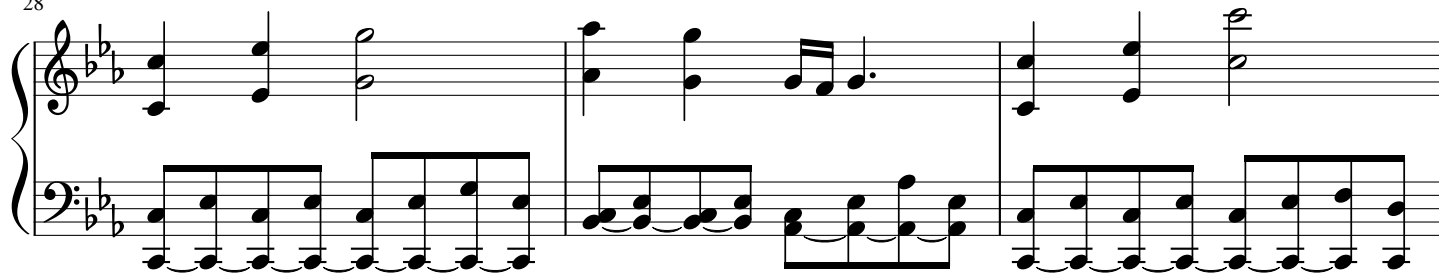
Measures 6-10. Measure 6 begins with a mezzo-piano (*mp*) dynamic. Measure 8 includes a crescendo marking (*cresc.*) with a dashed line. The melody in the right hand consists of eighth-note patterns, while the left hand provides a steady accompaniment of eighth notes.

Measures 11-15. Measure 11 starts with a mezzo-piano (*mp*) dynamic. Measure 14 features a forte (*f*) dynamic. The right hand continues with eighth-note patterns, and the left hand has a more active role with some chords and moving lines.

Measures 16-21. Measure 16 begins with a piano (*p*) dynamic. The piece shows a dynamic shift back to piano. The right hand has a more complex texture with some triplets and sixteenth notes, while the left hand remains mostly eighth-note based.

Measures 22-26. Measure 22 starts with a mezzo-piano (*mp*) dynamic. The final measure (26) ends with a mezzo-piano (*mp*) dynamic. The notation concludes with a final chord in the right hand and a sustained bass line in the left hand.

28



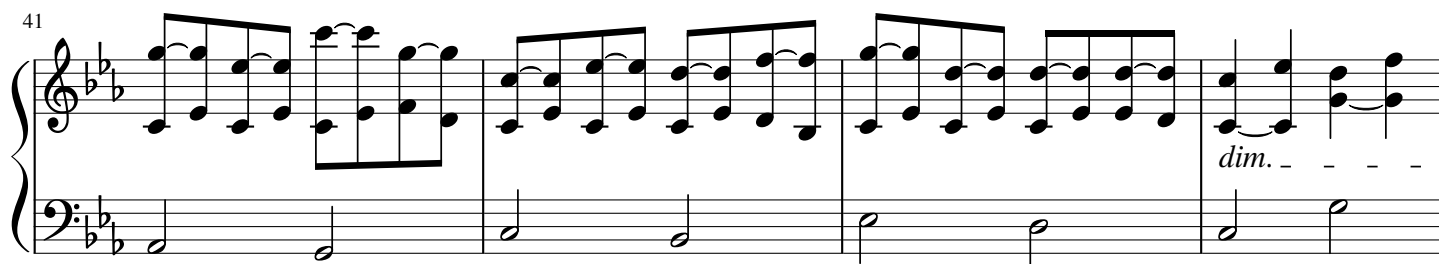
31



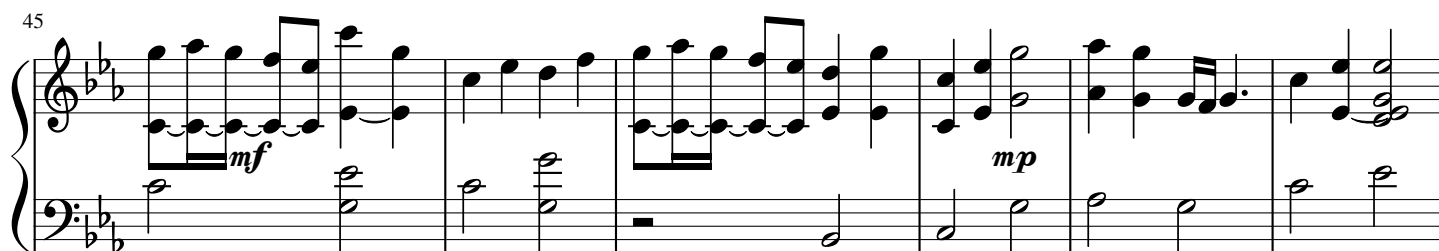
35



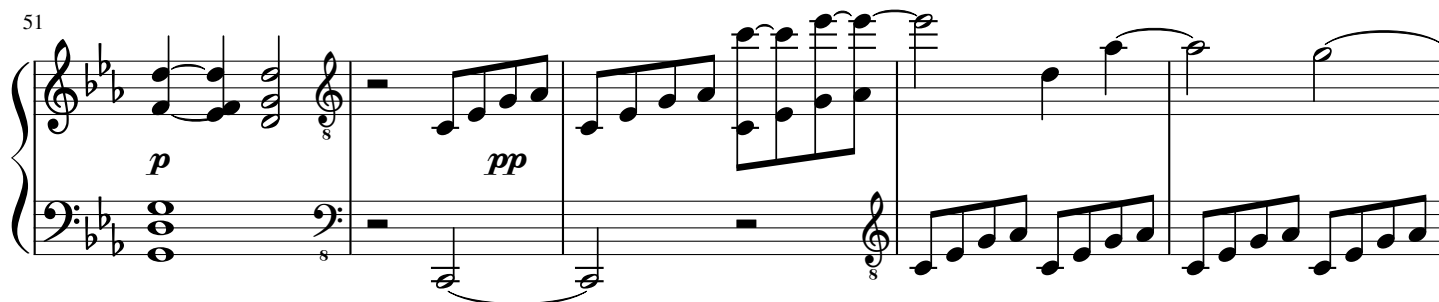
41



45



51



56

